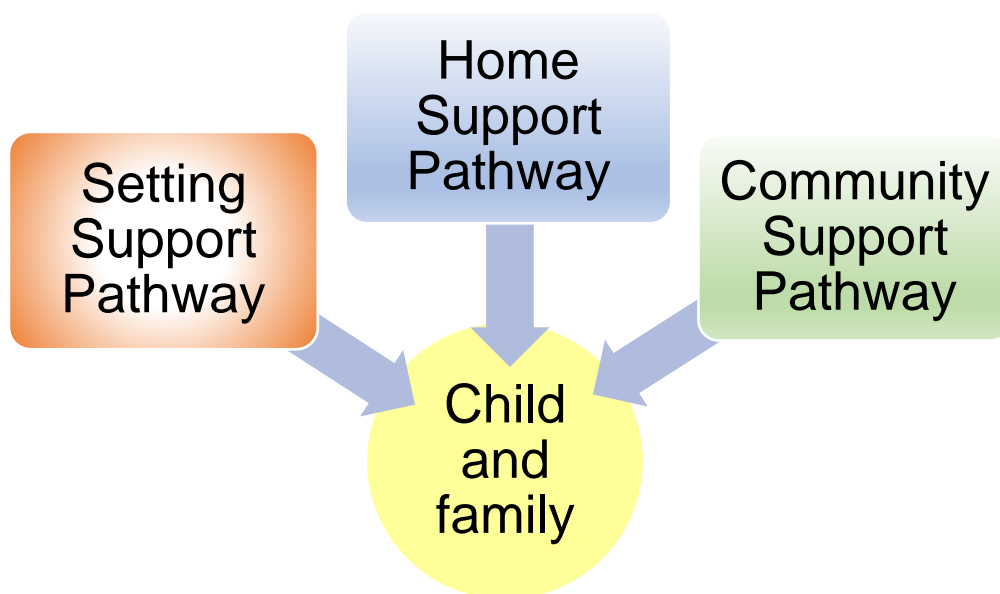


Early Years Complex Needs Service Pathways of Support

Devon Early Years Complex Needs (EYCN) Service is an early years education service for children with significant or complex developmental delay in two or more areas of development. One of these areas must be cognition (acquiring knowledge or understanding). We support families for children aged birth to 5 years until they start full time education.

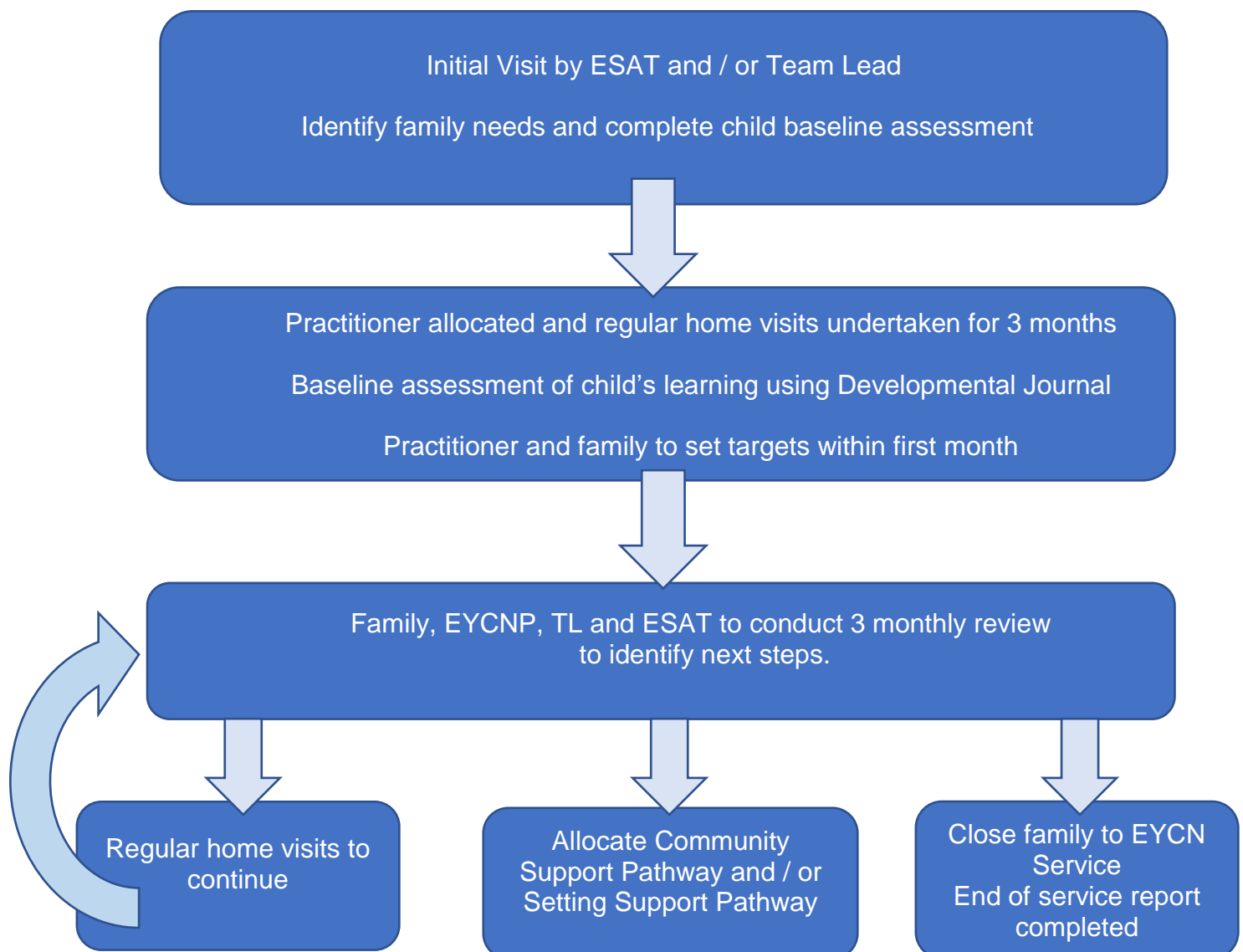
The referral will be reviewed by the EYCN Service Lead and Early Support and Advisory Teacher (ESAT). If the child's needs meets the EYCN Service criteria, they will be allocated to a pathway of support. These can include one of the following pathways, or a combination of pathways:



The EYCN Service will always work in collaboration with parents and other professionals to ensure the right support is offered, at the right time and in the right place. One of the key principles of the EYCN Service is to work together with parents and carers on a regular basis to support the child's learning. We will ensure that your child is referred to other agencies to enable continued support for any ongoing need, for example, physiotherapy or speech and language therapy.

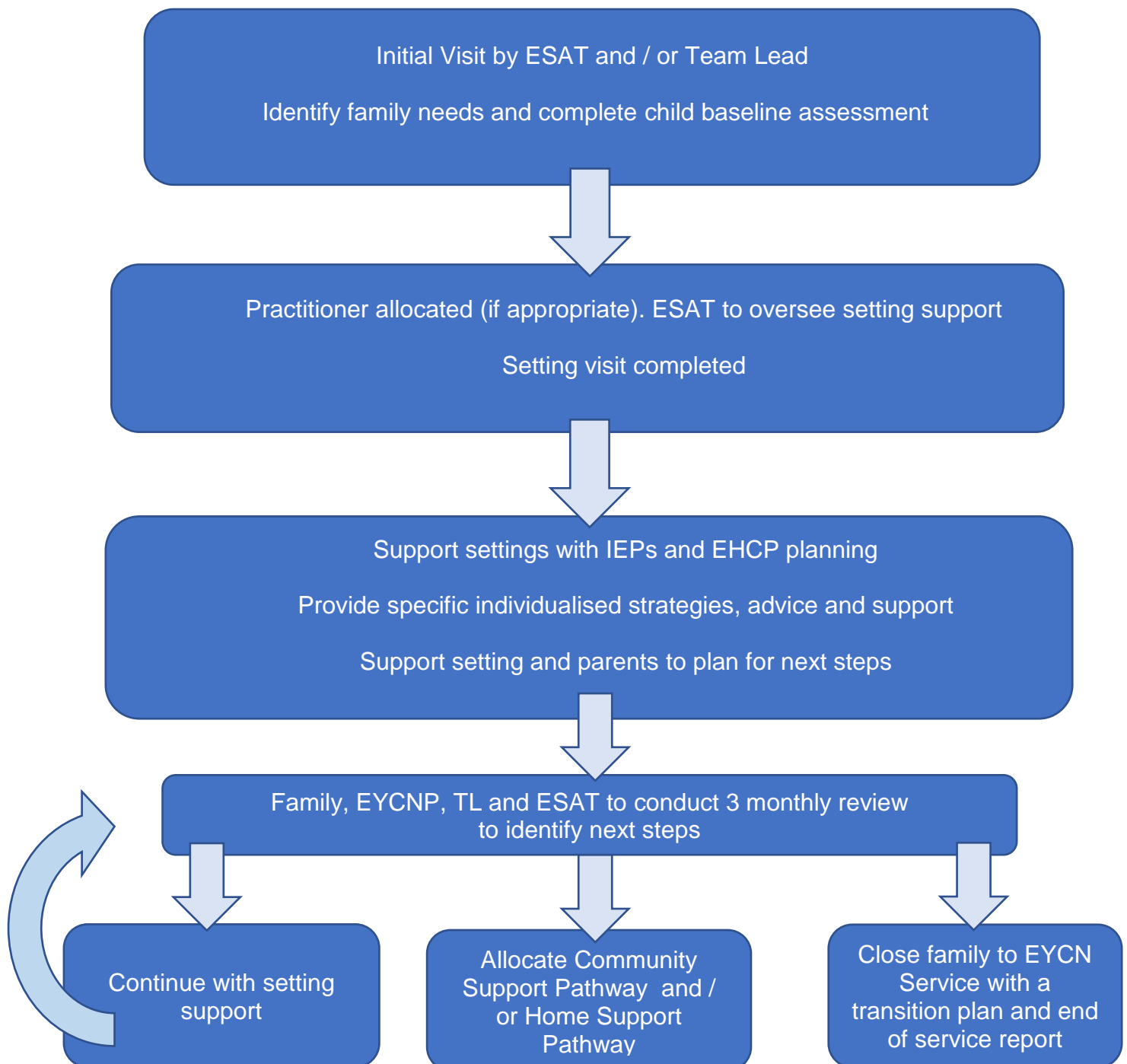
Home Support Pathway

The purpose of the Home Support Pathway is to provide home visits where the child's skills can be developed. EYCN Practitioners (EYCNP) work in partnership with parent/carers to support all areas of their child's development through structured and child led play and a family focus time.



Setting Support Pathway

The EYCN Service will work with parents and the child's setting (nursery, pre-school, childminder) to support inclusion and continuity of approaches. EYCN Practitioners (EYCNPs) work in partnership with setting staff to support all areas of the child's development. ESATs contribute to the Special Education Needs and Disability (SEND) process, transitions into settings and schools, including advice on requesting Education Health and Care Plans (EHCPs).



Community Support Pathway

The EYCN Service can support families to access community groups. Families can be referred to groups delivered by children’s centres, including step by step groups; these groups focus on supporting children with a disability. Families can also attend groups led by the EYCN Service. We also offer support to groups that are local to families for example in a local library and virtual drop in sessions.

